

# Perrin Creek Flood Study

## Volume 2 of 2

# Flood Mapping

---

Prepared by DHI Water & Environment Pty Ltd  
Prepared for Brisbane City Council

July 2016

### **Flood Study Report Disclaimer**

The Brisbane City Council ("Council") has prepared this report as a general reference source only and has taken all reasonable measures to ensure that the material contained in this report is as accurate as possible at the time of publication. However, the Council makes no representation and gives no warranty about the accuracy, reliability, completeness or suitability for any particular purpose of the information and the user uses and relies upon the information in this report at its own sole risk and liability. Council is not liable for errors or omissions in this report. To the full extent that it is able to do so in law, the Council disclaims all liability, (including liability in negligence), for any loss, damage or costs, (including indirect and consequential loss and damage), caused by or arising from anyone using or relying on the information in this report for any purpose whatsoever.

Flood information and studies regarding the Brisbane City Council local government area are periodically reviewed and updated by the Council. Changes may be periodically made to the flood study information. These changes may or may not be incorporated in any new version of the flood study publication. It is the responsibility of the user to ensure that the report being referred to is the most current and that the information in such report is the most up-to-date information available.

*This report is subject to copyright law. No part may be reproduced by any process except in accordance with the provisions of the Copyright Act 1968.*



*Dedicated to a better Brisbane*



DHI Water and Environment Pty Ltd.

Level 3, 67 Astor Terrace

Spring Hill QLD 4000

Telephone 07 3236 9161



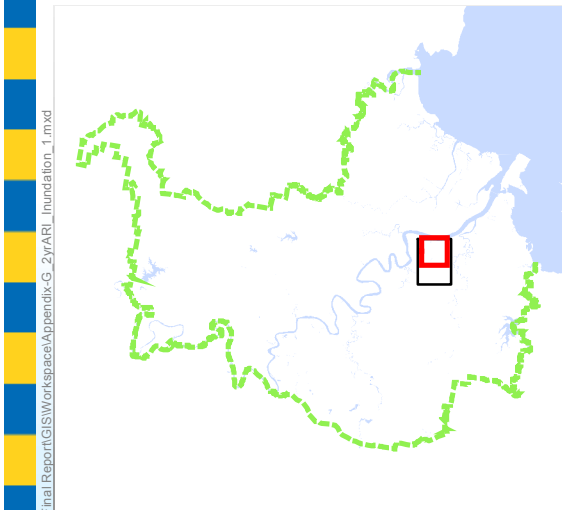
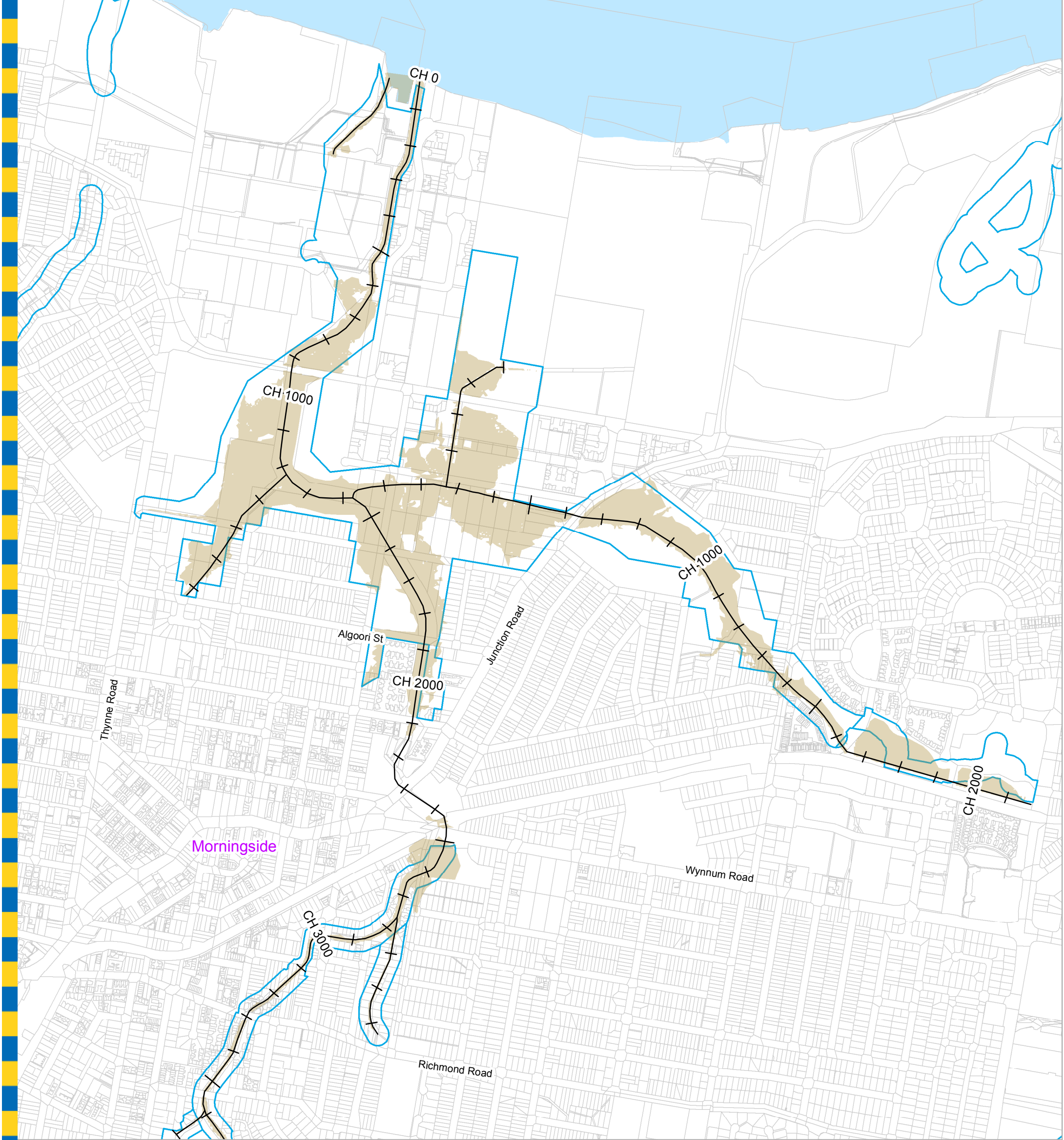
*Dedicated to a better Brisbane*

The Brisbane City Council ("Council") has provided this report as a general reference source only and the data contained herein should not be interpreted as forming Council policy. All reasonable measures have been taken to ensure that the material contained in this report is as accurate as possible at the time of publication. However, the Council makes no representation and gives no warranty about the accuracy, reliability, completeness or suitability for any particular purpose of the information and the user uses and relies upon the information in this report at its own sole risk and liability. Council is not liable for errors or omissions in this report. To the full extent that it is able to do so in law, the Council disclaims all liability, (including liability in negligence), for any loss, damage or costs, (including indirect and consequential loss and damage), caused by or arising from anyone using or relying on the information in this report for any purpose whatsoever.

| Document Control: |                               |      |             |                           |             |                           |                    |
|-------------------|-------------------------------|------|-------------|---------------------------|-------------|---------------------------|--------------------|
| Issue No.         | Date of issue                 | Amdt | Prepared By |                           | Reviewed By |                           | Approved for Issue |
|                   |                               |      | Initials    | RPEQ Number and Signature | Initials    | RPEQ Number and Signature | Initials           |
| Draft<br>Final    | 12 <sup>th</sup> June<br>2016 | 1    | NK          | 14816                     | CRM         |                           |                    |
| Final             | 14 <sup>th</sup> July<br>2016 | 1    | NK          | 14816                     | MFB         | 6815 MFB                  |                    |

## Table of Contents

|    |  |    |
|----|--|----|
| 1. | 50% AEP Flood Extent Map, Existing Scenario .....  | 4  |
| 2. | 20% AEP Flood Extent Map, Existing Scenario .....  | 6  |
| 3. | 10% AEP Flood Extent Map, Existing Scenario .....  | 8  |
| 4. | 5% AEP Flood Extent Map, Existing Scenario .....   | 10 |
| 5. | 2% AEP Flood Extent Map, Existing Scenario .....   | 12 |
| 6. | 1% AEP Flood Extent Map, Existing Scenario .....   | 14 |
| 7. | 0.5% AEP Flood Extent Map, Existing Scenario ..... | 16 |
| 8. | 0.2% Flood Extent Map, Existing Scenario .....     | 18 |
| 9. | 0.05% Flood Extent Map, Existing Scenario .....    | 20 |



- Legend**
- AMTD\_Line
  - City Plan Waterway Corridors
  - Flood Inundation Extent
  - Waterway/Waterbody

**For Information Only - Not Council Policy**

Prepared by DHI for:  
 Brisbane City Council  
 City Projects Office  
 GPO Box 1434  
 Brisbane Qld 4001  
 For more information  
 visit [www.brisbane.qld.gov.au](http://www.brisbane.qld.gov.au)  
 or call (07) 3403 8888



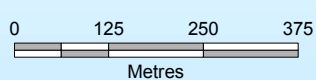
*Dedicated to a better Brisbane*

**DATA INFORMATION**

The flood maps must be read in conjunction with the flood study report and interpreted by a qualified professional engineer. The flood maps are based on the best data available to Brisbane City Council ("Council") at the time the maps were developed. Council, and the copyright owners listed below, give no warranty in relation to the data (including accuracy, reliability, completeness, currency or suitability) presented in these maps and the user uses and relies upon the data in the maps at its own sole risk and liability. Council is not liable for errors or omissions in the flood maps. To the full extent that it is able to do so in law, the Council disclaims all liability (including without limitation, liability in negligence) for any loss, damage or costs (including indirect and consequential loss and damage), caused by or arising from anyone using or relying on the data contained in the flood maps for any purpose whatsoever.

©Brisbane City Council 2014 (Unless stated below)  
 Cadastre © 2006 Department of Natural Resources and Mines 2009 NAVTEQ Street Data © 2008 NAVTEQ;  
 2007 Aerial Imagery ©2007 Furgo Spatial Solutions; 2005 Aerial Imagery ©2005 QASCO; 2005 Brisway © 2009  
 Melway Publishing; 2005 DigitalGlobe Quickbird Satellite Imagery © 2005 DigitalGlobe; 2002 Contours © 2002 AAMHatch

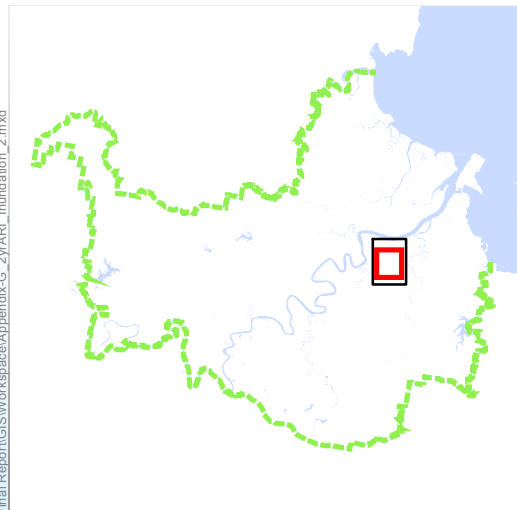
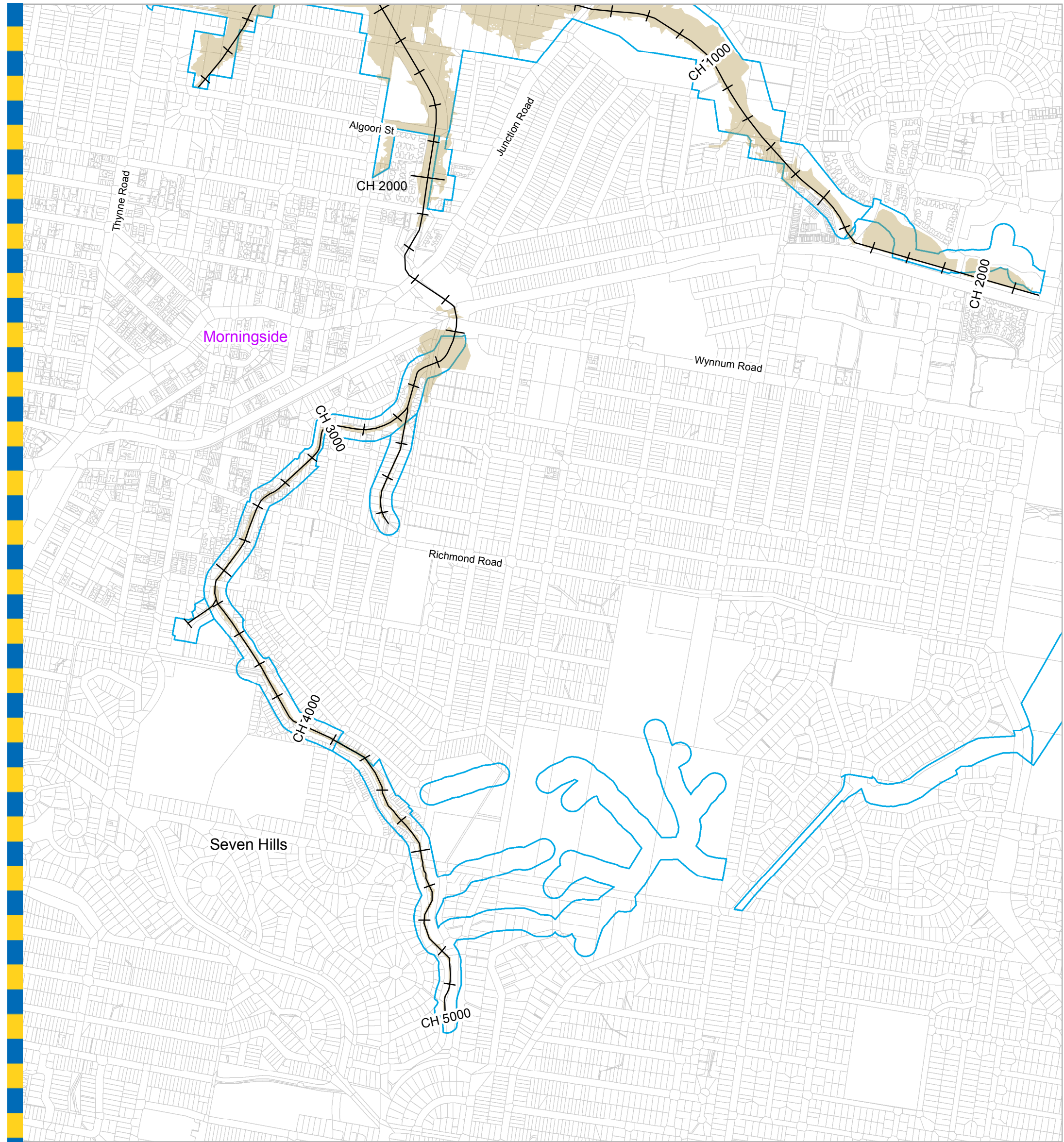
**Perrin Creek  
 50% AEP Flood Extent Map 1  
 Existing Scenario**



Prepared : madu  
 Checked : NC  
 Revision : 0  
 Publication Date : 30 Jun 2016  
 Project Number : 100001

File: X:\4380218\Work\Deliverables\Final\Report\GIS\Workspace\Appendix-G\_2\ARI\_inundation\_1.mxd





**Legend**

- AMTD\_Line
- City Plan Waterway Corridors
- Flood Inundation Extent
- Waterway/Waterbody

**For Information Only - Not Council Policy**

Prepared by DHI for:  
 Brisbane City Council  
 City Projects Office  
 GPO Box 1434  
 Brisbane Qld 4001  
 For more information  
 visit [www.brisbane.qld.gov.au](http://www.brisbane.qld.gov.au)  
 or call (07) 3403 8888

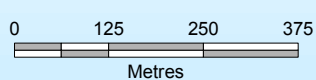


*Dedicated to a better Brisbane*

**DATA INFORMATION**

The flood maps must be read in conjunction with the flood study report and interpreted by a qualified professional engineer. The flood maps are based on the best data available to Brisbane City Council ("Council") at the time the maps were developed. Council, and the copyright owners listed below, give no warranty in relation to the data (including accuracy, reliability, completeness, currency or suitability) presented in these maps and the user uses and relies upon the data in the maps at its own sole risk and liability. Council is not liable for errors or omissions in the flood maps. To the full extent that it is able to do so in law, the Council disclaims all liability (including without limitation, liability in negligence) for any loss, damage or costs (including indirect and consequential loss and damage), caused by or arising from anyone using or relying on the data contained in the flood maps for any purpose whatsoever.

**Perrin Creek  
 50% AEP Flood Extent Map 2  
 Existing Scenario**

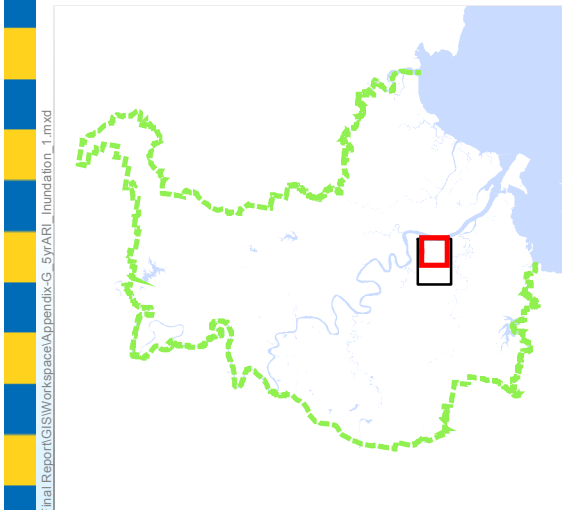
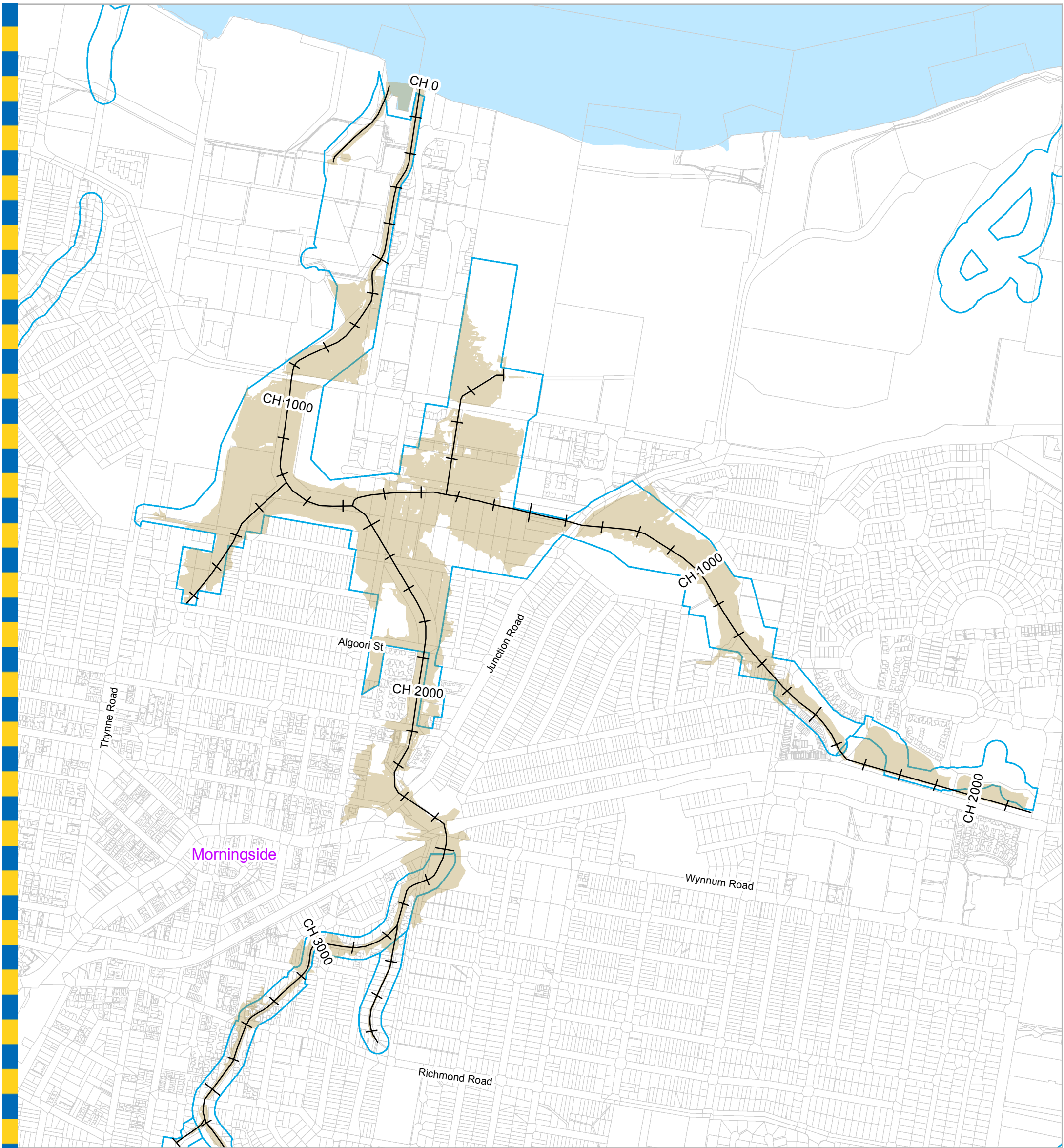


Prepared : madu  
 Checked : NC  
 Revision : 0  
 Publication Date : 30 Jun 2016  
 Project Number : 100001

©Brisbane City Council 2014 (Unless stated below)  
 Cadastre © 2006 Department of Natural Resources and Mines 2009 NAVTEQ Street Data © 2008 NAVTEQ;  
 2007 Aerial Imagery © 2007 Furgu Spatial Solutions; 2005 Aerial Imagery © 2005 QASCO; 2005 Brisway © 2009  
 Melway Publishing; 2005 DigitalGlobe Quickbird Satellite Imagery © 2005 DigitalGlobe; 2002 Contours © 2002 AAMHatch

File: X:\4380218\Work\Deliverables\Final\Report\GIS\Workspace\Appendix-G\_2\AR1\_inundation\_2.mxd





**Legend**

- AMTD\_Line
- City Plan Waterway Corridors
- Flood Inundation Extent
- Waterway/Waterbody

**DATA INFORMATION**

The flood maps must be read in conjunction with the flood study report and interpreted by a qualified professional engineer. The flood maps are based on the best data available to Brisbane City Council ("Council") at the time the maps were developed. Council, and the copyright owners listed below, give no warranty in relation to the data (including accuracy, reliability, completeness, currency or suitability) presented in these maps and the user uses and relies upon the data in the maps at its own sole risk and liability. Council is not liable for errors or omissions in the flood maps. To the full extent that it is able to do so in law, the Council disclaims all liability (including without limitation, liability in negligence) for any loss, damage or costs (including indirect and consequential loss and damage), caused by or arising from anyone using or relying on the data contained in the flood maps for any purpose whatsoever.

©Brisbane City Council 2014 (Unless stated below)  
 Cadastre © 2006 Department of Natural Resources and Mines 2009 NAVTEQ Street Data © 2008 NAVTEQ;  
 2007 Aerial Imagery ©2007 Furgo Spatial Solutions; 2005 Aerial Imagery ©2005 QASCO; 2005 Brisway © 2009  
 Melway Publishing; 2005 DigitalGlobe Quickbird Satellite Imagery © 2005 DigitalGlobe; 2002 Contours © 2002 AAMHatch

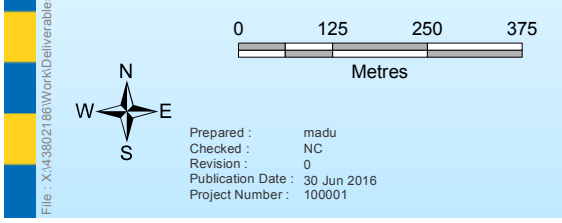
**For Information Only - Not Council Policy**

Prepared by DHI for:  
 Brisbane City Council  
 City Projects Office  
 GPO Box 1434  
 Brisbane Qld 4001  
 For more information  
 visit [www.brisbane.qld.gov.au](http://www.brisbane.qld.gov.au)  
 or call (07) 3403 8888



*Dedicated to a better Brisbane*

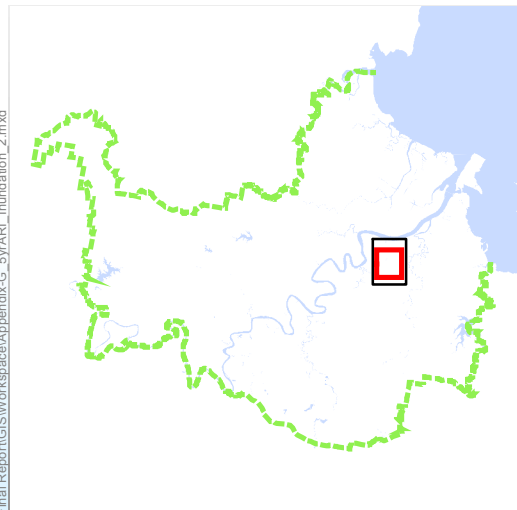
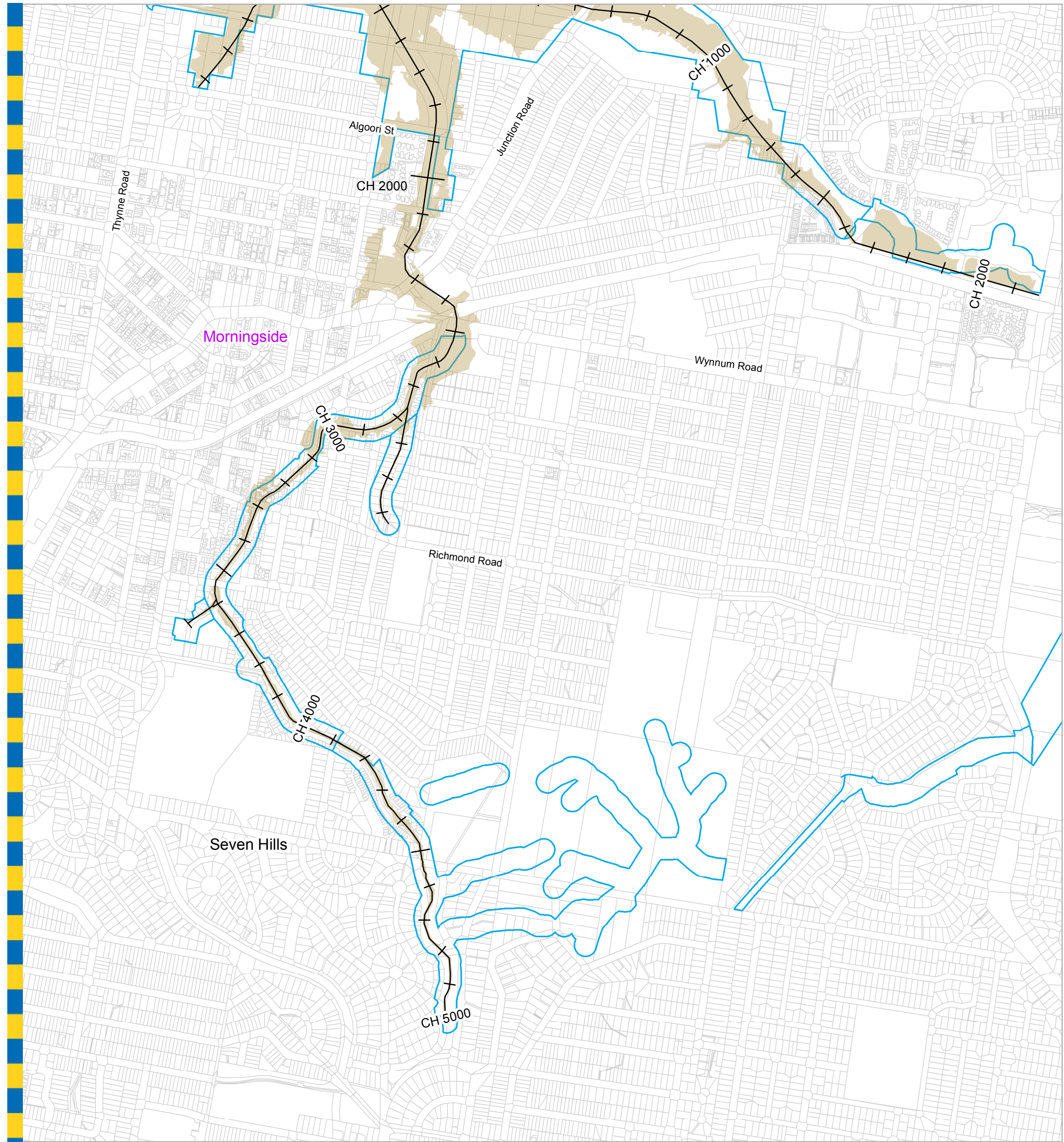
**Perrin Creek  
 20% AEP Flood Extent Map 1  
 Existing Scenario**



File: X:\4380218\Work\Deliverables\Final\Report\GIS\Workspace\Appendix-G\_5yrARI\_inundation\_1.mxd

Prepared : madu  
 Checked : NC  
 Revision : 0  
 Publication Date : 30 Jun 2016  
 Project Number : 100001





**Legend**

- AMTD\_Line
- City Plan Waterway Corridors
- Flood Inundation Extent
- Waterway/Waterbody

**For Information Only - Not Council Policy**

Prepared by DHI for:  
 Brisbane City Council  
 City Projects Office  
 GPO Box 1434  
 Brisbane Qld 4001  
 For more information  
 visit [www.brisbane.qld.gov.au](http://www.brisbane.qld.gov.au)  
 or call (07) 3403 8888

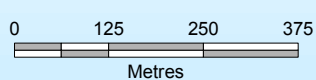


*Dedicated to a better Brisbane*

**DATA INFORMATION**

The flood maps must be read in conjunction with the flood study report and interpreted by a qualified professional engineer. The flood maps are based on the best data available to Brisbane City Council ("Council") at the time the maps were developed. Council, and the copyright owners listed below, give no warranty in relation to the data (including accuracy, reliability, completeness, currency or suitability) presented in these maps and the user uses and relies upon the data in the maps at its own sole risk and liability. Council is not liable for errors or omissions in the flood maps. To the full extent that it is able to do so in law, the Council disclaims all liability (including without limitation, liability in negligence) for any loss, damage or costs (including indirect and consequential loss and damage), caused by or arising from anyone using or relying on the data contained in the flood maps for any purpose whatsoever.

**Perrin Creek  
 20% AEP Flood Extent Map 2  
 Existing Scenario**

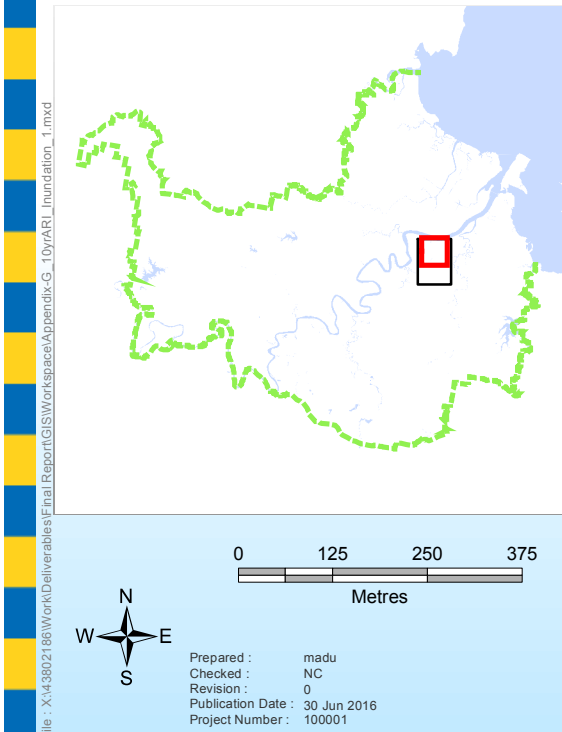


Prepared : madu  
 Checked : NC  
 Revision : 0  
 Publication Date : 30 Jun 2016  
 Project Number : 100001

©Brisbane City Council 2014 (Unless stated below)  
 Cadastre © 2006 Department of Natural Resources and Mines 2009 NAVTEQ Street Data © 2008 NAVTEQ;  
 2007 Aerial Imagery ©2007 Furgo Spatial Solutions; 2005 Aerial Imagery ©2005 QASCO; 2005 Brisway © 2009  
 Melway Publishing; 2005 DigitalGlobe Quickbird Satellite Imagery © 2005 DigitalGlobe; 2002 Contours © 2002 AAMHatch

File: X:\4380218\Work\Deliverables\Final\Report\GIS\Workspace\Appendix-G\_5\AR1\_inundation\_2.mxd





**Legend**

- AMTD\_Line
- City Plan Waterway Corridors
- Flood Inundation Extent
- Waterway/Waterbody

**DATA INFORMATION**

The flood maps must be read in conjunction with the flood study report and interpreted by a qualified professional engineer. The flood maps are based on the best data available to Brisbane City Council ("Council") at the time the maps were developed. Council, and the copyright owners listed below, give no warranty in relation to the data (including accuracy, reliability, completeness, currency or suitability) presented in these maps and the user uses and relies upon the data in the maps at its own sole risk and liability. Council is not liable for errors or omissions in the flood maps. To the full extent that it is able to do so in law, the Council disclaims all liability (including without limitation, liability in negligence) for any loss, damage or costs (including indirect and consequential loss and damage), caused by or arising from anyone using or relying on the data contained in the flood maps for any purpose whatsoever.

©Brisbane City Council 2014 (Unless stated below)  
 Cadastre © 2006 Department of Natural Resources and Mines 2009 NAVTEQ Street Data © 2008 NAVTEQ;  
 2007 Aerial Imagery ©2007 Furgo Spatial Solutions; 2005 Aerial Imagery ©2005 QASCO; 2005 Brisway © 2009  
 Melway Publishing; 2005 DigitalGlobe Quickbird Satellite Imagery © 2005 DigitalGlobe; 2002 Contours © 2002 AAMHatch

**For Information Only - Not Council Policy**

Prepared by DHI for:  
 Brisbane City Council  
 City Projects Office  
 GPO Box 1434  
 Brisbane Qld 4001  
 For more information  
 visit [www.brisbane.qld.gov.au](http://www.brisbane.qld.gov.au)  
 or call (07) 3403 8888



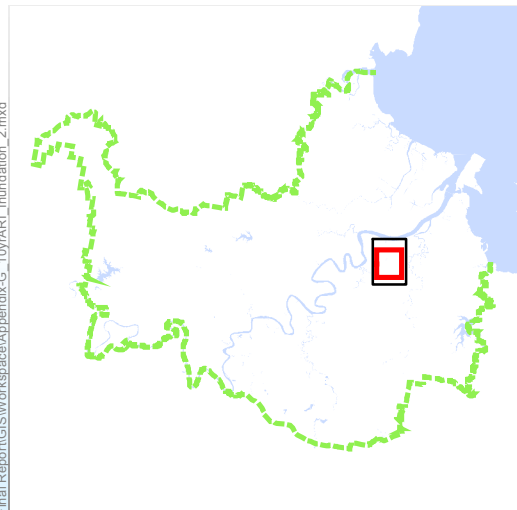
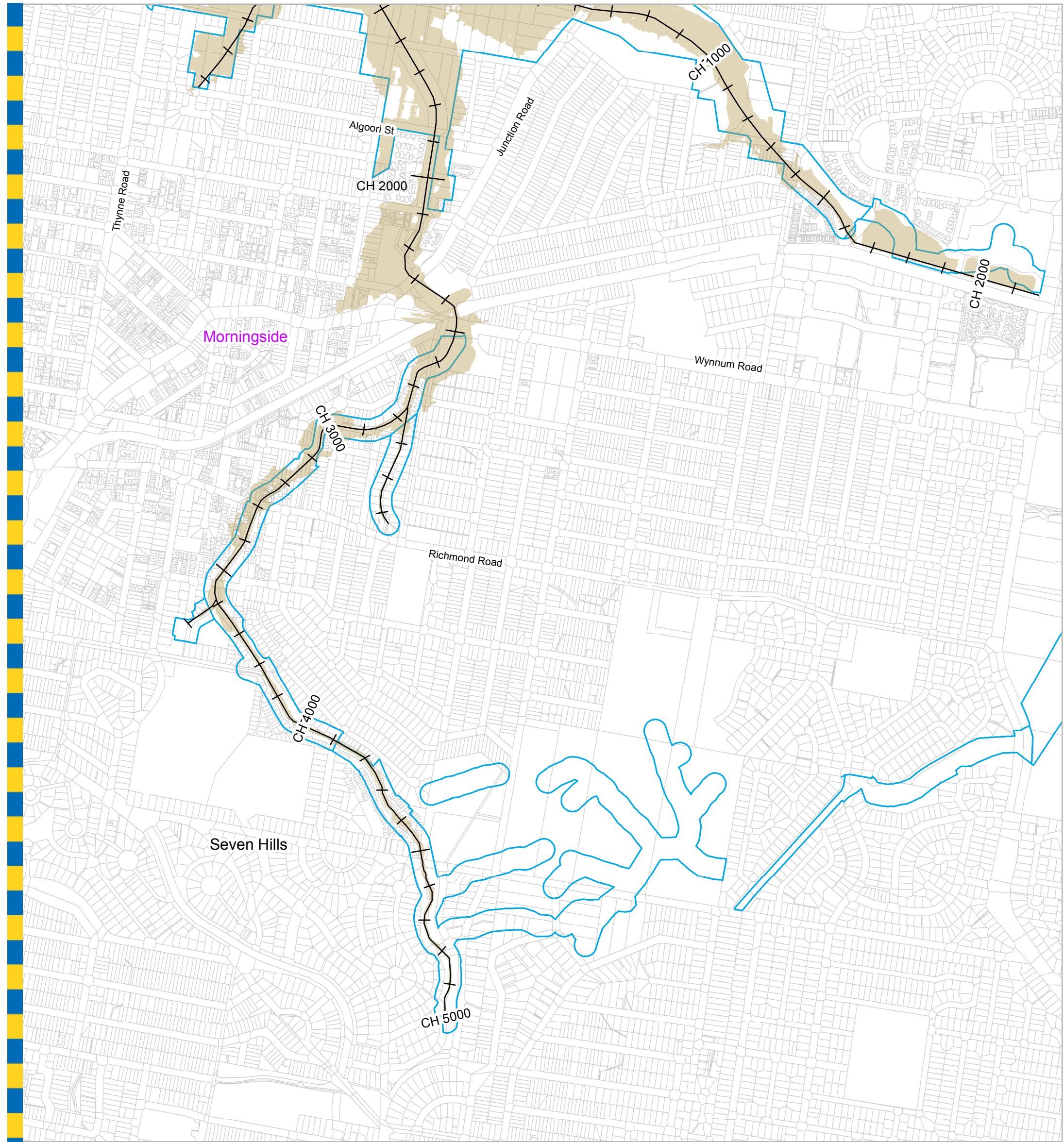
*Dedicated to a better Brisbane*

**Perrin Creek  
 10% AEP Flood Extent Map 1  
 Existing Scenario**

File: X:\4380218\Work\Deliverables\Final\Report\GIS\Workspace\Appendix-G\_10yrARL\_Imundation\_1.mxd

Prepared : madu  
 Checked : NC  
 Revision : 0  
 Publication Date : 30 Jun 2016  
 Project Number : 100001





**Legend**

- AMTD\_Line
- City Plan Waterway Corridors
- Flood Inundation Extent
- Waterway/Waterbody

**For Information Only - Not Council Policy**

Prepared by DHI for:  
 Brisbane City Council  
 City Projects Office  
 GPO Box 1434  
 Brisbane Qld 4001  
 For more information  
 visit [www.brisbane.qld.gov.au](http://www.brisbane.qld.gov.au)  
 or call (07) 3403 8888

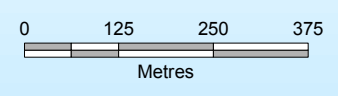


*Dedicated to a better Brisbane*

**DATA INFORMATION**

The flood maps must be read in conjunction with the flood study report and interpreted by a qualified professional engineer. The flood maps are based on the best data available to Brisbane City Council ("Council") at the time the maps were developed. Council, and the copyright owners listed below, give no warranty in relation to the data (including accuracy, reliability, completeness, currency or suitability) presented in these maps and the user uses and relies upon the data in the maps at its own sole risk and liability. Council is not liable for errors or omissions in the flood maps. To the full extent that it is able to do so in law, the Council disclaims all liability (including without limitation, liability in negligence) for any loss, damage or costs (including indirect and consequential loss and damage), caused by or arising from anyone using or relying on the data contained in the flood maps for any purpose whatsoever.

**Perrin Creek  
 10% AEP Flood Extent Map 2  
 Existing Scenario**

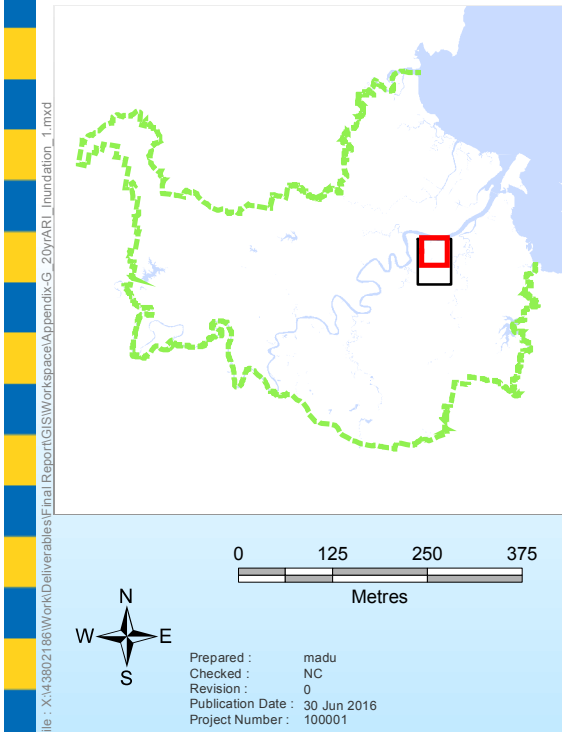


Prepared : madu  
 Checked : NC  
 Revision : 0  
 Publication Date : 30 Jun 2016  
 Project Number : 100001

©Brisbane City Council 2014 (Unless stated below)  
 Cadastre © 2006 Department of Natural Resources and Mines 2009 NAVTEQ Street Data © 2008 NAVTEQ;  
 2007 Aerial Imagery © 2007 Furgo Spatial Solutions; 2005 Aerial Imagery © 2005 QASCO; 2005 Brisway © 2009  
 Melway Publishing; 2005 DigitalGlobe Quickbird Satellite Imagery © 2005 DigitalGlobe; 2002 Contours © 2002 AAMHatch

File: X:\4380218\Work\Deliverables\Final\Report\GIS\Workspace\Appendix-G\_10yrARL\_Inundation\_2.mxd





**Legend**

- AMTD\_Line
- City Plan Waterway Corridors
- Flood Inundation Extent
- Waterway/Waterbody

**DATA INFORMATION**

The flood maps must be read in conjunction with the flood study report and interpreted by a qualified professional engineer. The flood maps are based on the best data available to Brisbane City Council ("Council") at the time the maps were developed. Council, and the copyright owners listed below, give no warranty in relation to the data (including accuracy, reliability, completeness, currency or suitability) presented in these maps and the user uses and relies upon the data in the maps at its own sole risk and liability. Council is not liable for errors or omissions in the flood maps. To the full extent that it is able to do so in law, the Council disclaims all liability (including without limitation, liability in negligence) for any loss, damage or costs (including indirect and consequential loss and damage), caused by or arising from anyone using or relying on the data contained in the flood maps for any purpose whatsoever.

©Brisbane City Council 2014 (Unless stated below)  
 Cadastre © 2006 Department of Natural Resources and Mines 2009 NAVTEQ Street Data © 2008 NAVTEQ;  
 2007 Aerial Imagery ©2007 Furgo Spatial Solutions; 2005 Aerial Imagery ©2005 QASCO; 2005 Brisway © 2009  
 Melway Publishing; 2005 DigitalGlobe Quickbird Satellite Imagery © 2005 DigitalGlobe; 2002 Contours © 2002 AAMHatch

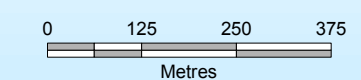
**For Information Only - Not Council Policy**

Prepared by DHI for:  
 Brisbane City Council  
 City Projects Office  
 GPO Box 1434  
 Brisbane Qld 4001  
 For more information  
 visit [www.brisbane.qld.gov.au](http://www.brisbane.qld.gov.au)  
 or call (07) 3403 8888



*Dedicated to a better Brisbane*

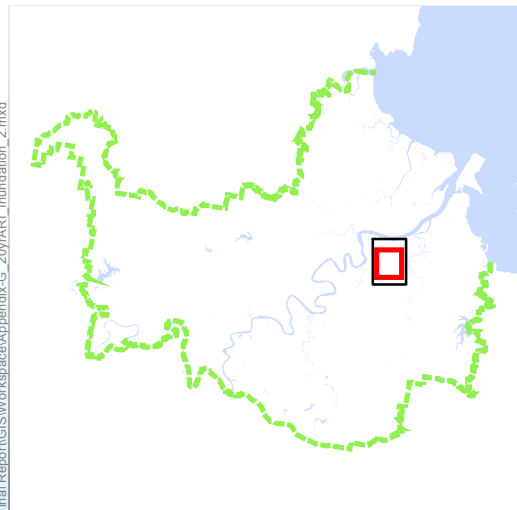
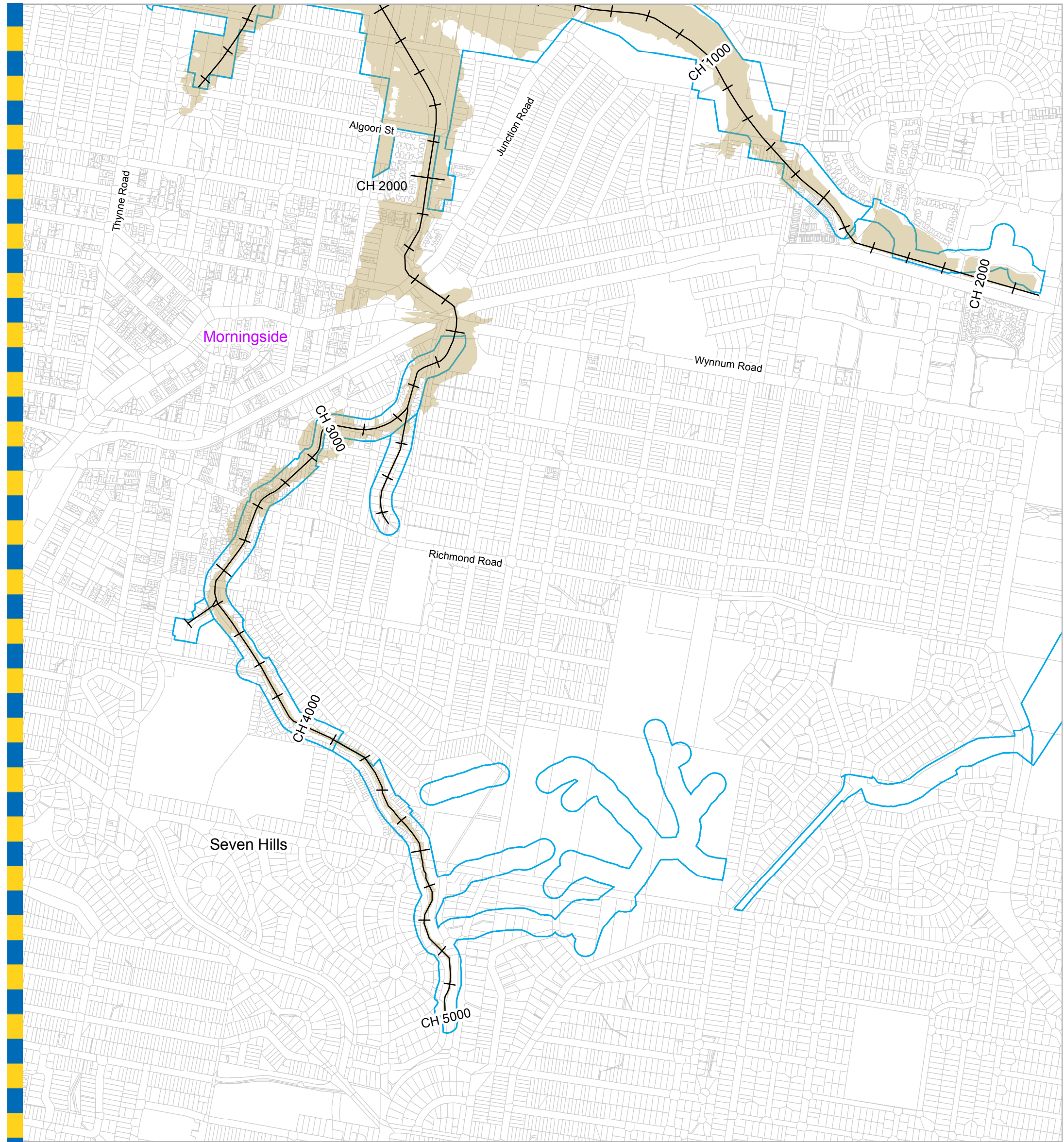
**Perrin Creek  
 5% AEP Flood Extent Map 1  
 Existing Scenario**



Prepared : madu  
 Checked : NC  
 Revision : 0  
 Publication Date : 30 Jun 2016  
 Project Number : 100001

File - X:\4380218\Work\Deliverables\Final\Report\GIS\Workspace\Appendix-G\_2016\ARL\_Imundation\_1.mxd





**Legend**

- AMTD\_Line
- City Plan Waterway Corridors
- Flood Inundation Extent
- Waterway/Waterbody

**For Information Only - Not Council Policy**

Prepared by DHI for:  
 Brisbane City Council  
 City Projects Office  
 GPO Box 1434  
 Brisbane Qld 4001  
 For more information  
 visit [www.brisbane.qld.gov.au](http://www.brisbane.qld.gov.au)  
 or call (07) 3403 8888

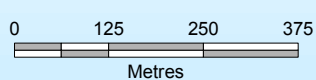


*Dedicated to a better Brisbane*

**DATA INFORMATION**

The flood maps must be read in conjunction with the flood study report and interpreted by a qualified professional engineer. The flood maps are based on the best data available to Brisbane City Council ("Council") at the time the maps were developed. Council, and the copyright owners listed below, give no warranty in relation to the data (including accuracy, reliability, completeness, currency or suitability) presented in these maps and the user uses and relies upon the data in the maps at its own sole risk and liability. Council is not liable for errors or omissions in the flood maps. To the full extent that it is able to do so in law, the Council disclaims all liability (including without limitation, liability in negligence) for any loss, damage or costs (including indirect and consequential loss and damage), caused by or arising from anyone using or relying on the data contained in the flood maps for any purpose whatsoever.

**Perrin Creek  
 5% AEP Flood Extent Map 2  
 Existing Scenario**

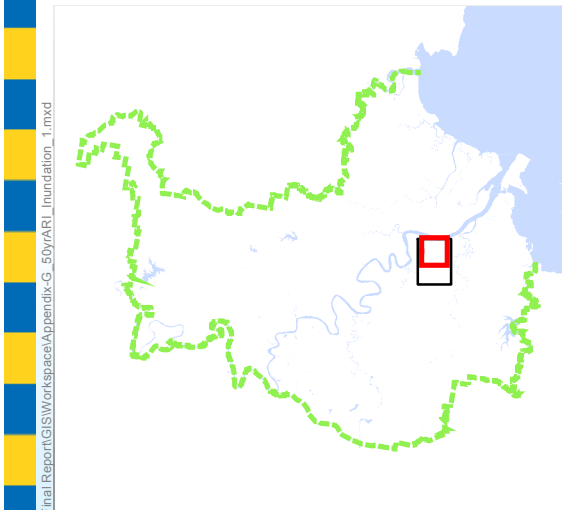


Prepared : madu  
 Checked : NC  
 Revision : 0  
 Publication Date : 30 Jun 2016  
 Project Number : 100001

©Brisbane City Council 2014 (Unless stated below)  
 Cadastre © 2006 Department of Natural Resources and Mines 2009 NAVTEQ Street Data © 2008 NAVTEQ;  
 2007 Aerial Imagery © 2007 Furgo Spatial Solutions; 2005 Aerial Imagery © 2005 QASCO; 2005 Brisway © 2009  
 Melway Publishing; 2005 DigitalGlobe Quickbird Satellite Imagery © 2005 DigitalGlobe; 2002 Contours © 2002 AAMHatch

File: X:\4380218\Work\Deliverables\Final\Report\GIS\Workspace\Appendix-G\_20y\ARL\_Inundation\_2.mxd





**Legend**

- AMTD\_Line
- City Plan Waterway Corridors
- Flood Inundation Extent
- Waterway/Waterbody

**DATA INFORMATION**

The flood maps must be read in conjunction with the flood study report and interpreted by a qualified professional engineer. The flood maps are based on the best data available to Brisbane City Council ("Council") at the time the maps were developed. Council, and the copyright owners listed below, give no warranty in relation to the data (including accuracy, reliability, completeness, currency or suitability) presented in these maps and the user uses and relies upon the data in the maps at its own sole risk and liability. Council is not liable for errors or omissions in the flood maps. To the full extent that it is able to do so in law, the Council disclaims all liability (including without limitation, liability in negligence) for any loss, damage or costs (including indirect and consequential loss and damage), caused by or arising from anyone using or relying on the data contained in the flood maps for any purpose whatsoever.

©Brisbane City Council 2014 (Unless stated below)  
 Cadastre © 2006 Department of Natural Resources and Mines 2009 NAVTEQ Street Data © 2008 NAVTEQ;  
 2007 Aerial Imagery ©2007 Furgo Spatial Solutions; 2005 Aerial Imagery ©2005 QASCO; 2005 Brisway © 2009  
 Melway Publishing; 2005 DigitalGlobe Quickbird Satellite Imagery © 2005 DigitalGlobe; 2002 Contours © 2002 AAMHatch

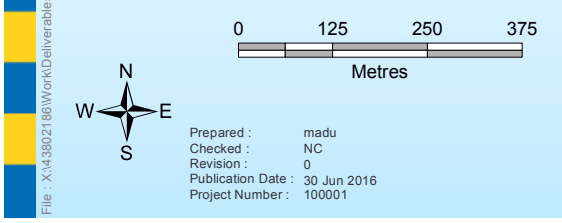
**For Information Only - Not Council Policy**

Prepared by DHI for:  
 Brisbane City Council  
 City Projects Office  
 GPO Box 1434  
 Brisbane Qld 4001  
 For more information  
 visit [www.brisbane.qld.gov.au](http://www.brisbane.qld.gov.au)  
 or call (07) 3403 8888



*Dedicated to a better Brisbane*

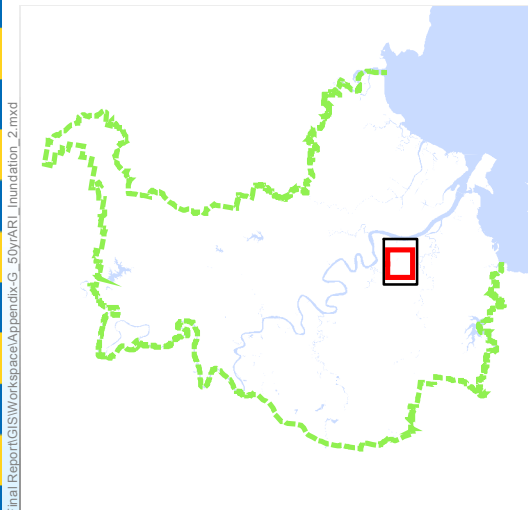
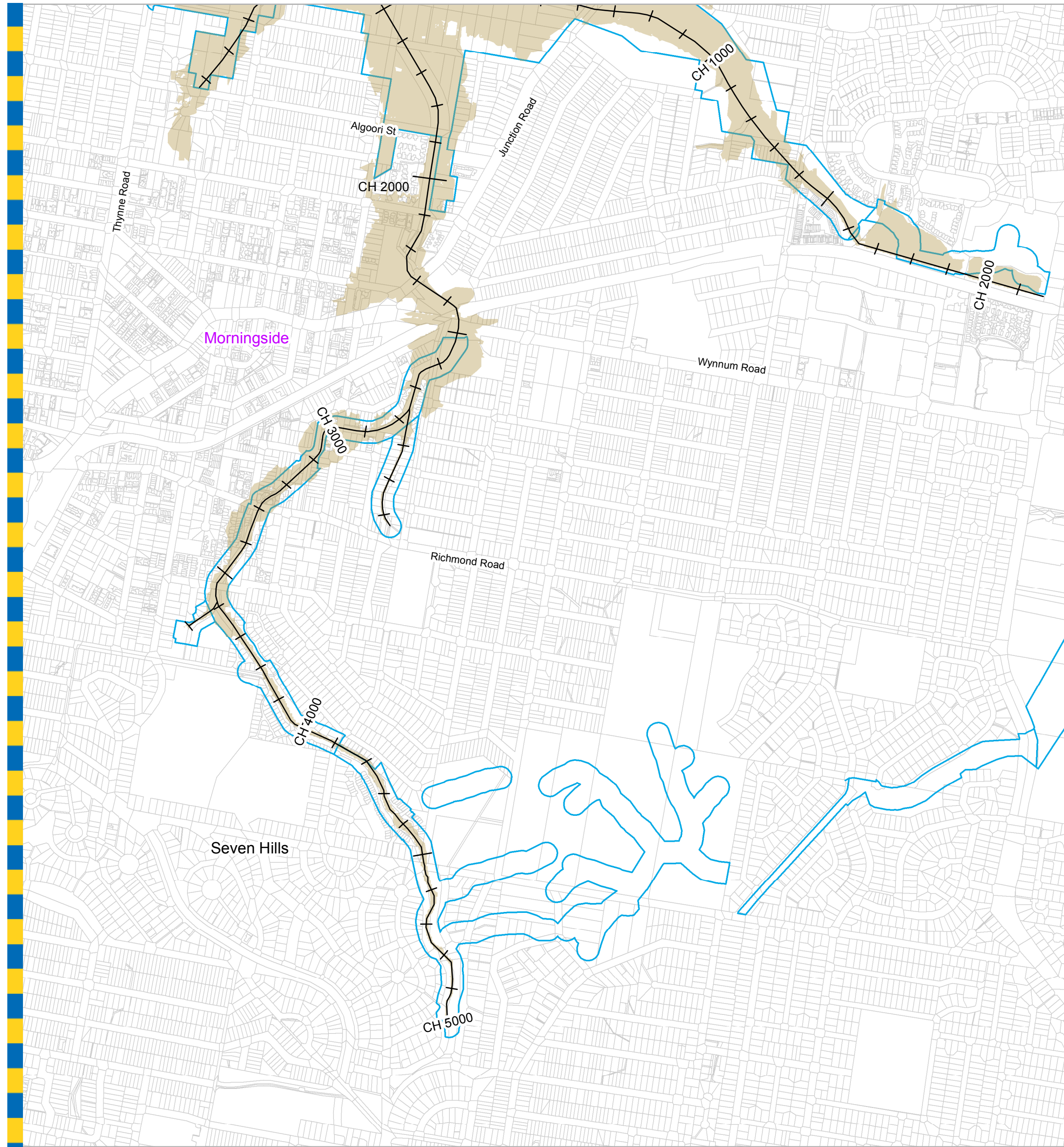
**Perrin Creek  
 2% AEP Flood Extent Map 1  
 Existing Scenario**



File: X:\4380218\Work\Deliverables\Final\Report\GIS\Workspace\Appendix-G\_50yrARL\_floodation\_1.mxd

Prepared : madu  
 Checked : NC  
 Revision : 0  
 Publication Date : 30 Jun 2016  
 Project Number : 100001





**Legend**

- AMTD\_Line
- City Plan Waterway Corridors
- Flood Inundation Extent
- Waterway/Waterbody

**DATA INFORMATION**

The flood maps must be read in conjunction with the flood study report and interpreted by a qualified professional engineer. The flood maps are based on the best data available to Brisbane City Council ("Council") at the time the maps were developed. Council, and the copyright owners listed below, give no warranty in relation to the data (including accuracy, reliability, completeness, currency or suitability) presented in these maps and the user uses and relies upon the data in the maps at its own sole risk and liability. Council is not liable for errors or omissions in the flood maps. To the full extent that it is able to do so in law, the Council disclaims all liability (including without limitation, liability in negligence) for any loss, damage or costs (including indirect and consequential loss and damage), caused by or arising from anyone using or relying on the data contained in the flood maps for any purpose whatsoever.

©Brisbane City Council 2014 (Unless stated below)  
 Cadastre © 2006 Department of Natural Resources and Mines 2009 NAVTEQ Street Data © 2008 NAVTEQ;  
 2007 Aerial Imagery © 2007 Furgu Spatial Solutions; 2005 Aerial Imagery © 2005 QASCO; 2005 Brisway © 2009  
 Melway Publishing; 2005 DigitalGlobe Quickbird Satellite Imagery © 2005 DigitalGlobe; 2002 Contours © 2002 AAMHatch

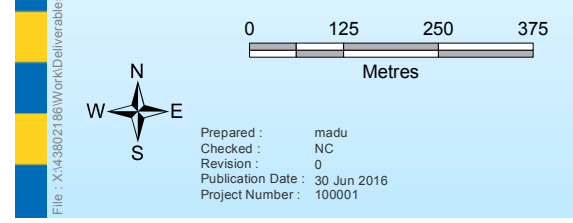
**For Information Only - Not Council Policy**

Prepared by DHI for:  
 Brisbane City Council  
 City Projects Office  
 GPO Box 1434  
 Brisbane Qld 4001  
 For more information  
 visit [www.brisbane.qld.gov.au](http://www.brisbane.qld.gov.au)  
 or call (07) 3403 8888



*Dedicated to a better Brisbane*

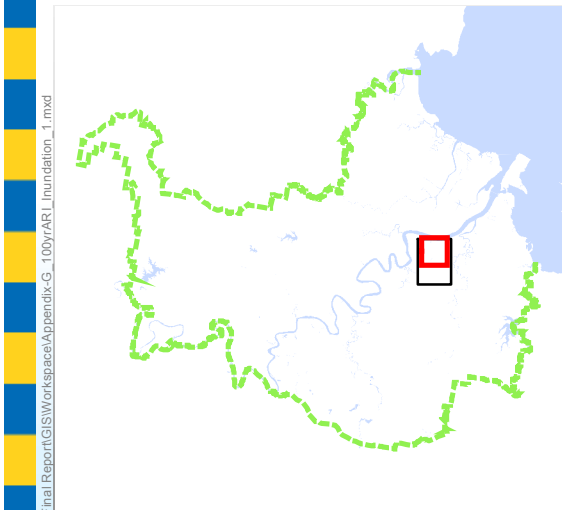
**Perrin Creek  
 2% AEP Flood Extent Map 2  
 Existing Scenario**



Prepared : madu  
 Checked : NC  
 Revision : 0  
 Publication Date : 30 Jun 2016  
 Project Number : 100001

File: X:\4380218\Work\Deliverables\Final\Report\GIS\Workspace\Appendix-G\_50yrARL\_Inundation\_2.mxd





**Legend**

- AMTD\_Line
- City Plan Waterway Corridors
- Flood Inundation Extent
- Waterway/Waterbody

**DATA INFORMATION**

The flood maps must be read in conjunction with the flood study report and interpreted by a qualified professional engineer. The flood maps are based on the best data available to Brisbane City Council ("Council") at the time the maps were developed. Council, and the copyright owners listed below, give no warranty in relation to the data (including accuracy, reliability, completeness, currency or suitability) presented in these maps and the user uses and relies upon the data in the maps at its own sole risk and liability. Council is not liable for errors or omissions in the flood maps. To the full extent that it is able to do so in law, the Council disclaims all liability (including without limitation, liability in negligence) for any loss, damage or costs (including indirect and consequential loss and damage), caused by or arising from anyone using or relying on the data contained in the flood maps for any purpose whatsoever.

©Brisbane City Council 2014 (Unless stated below)  
 Cadastre © 2006 Department of Natural Resources and Mines 2009 NAVTEQ Street Data © 2008 NAVTEQ;  
 2007 Aerial Imagery ©2007 Furgo Spatial Solutions; 2005 Aerial Imagery ©2005 QASCO; 2005 Brisway © 2009  
 Melway Publishing; 2005 DigitalGlobe Quickbird Satellite Imagery © 2005 DigitalGlobe; 2002 Contours © 2002 AAMHatch

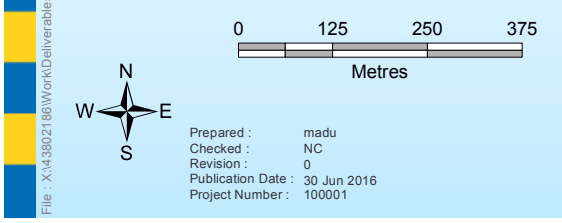
**For Information Only - Not Council Policy**

Prepared by DHI for:  
 Brisbane City Council  
 City Projects Office  
 GPO Box 1434  
 Brisbane Qld 4001  
 For more information  
 visit [www.brisbane.qld.gov.au](http://www.brisbane.qld.gov.au)  
 or call (07) 3403 8888



*Dedicated to a better Brisbane*

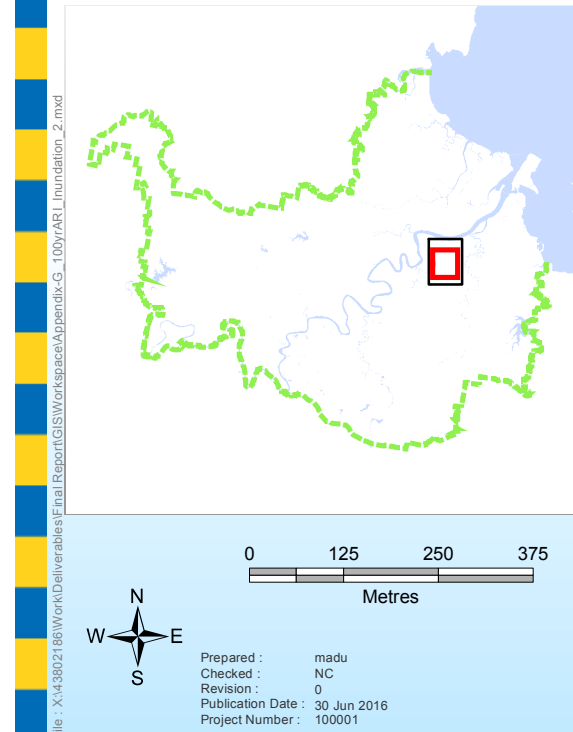
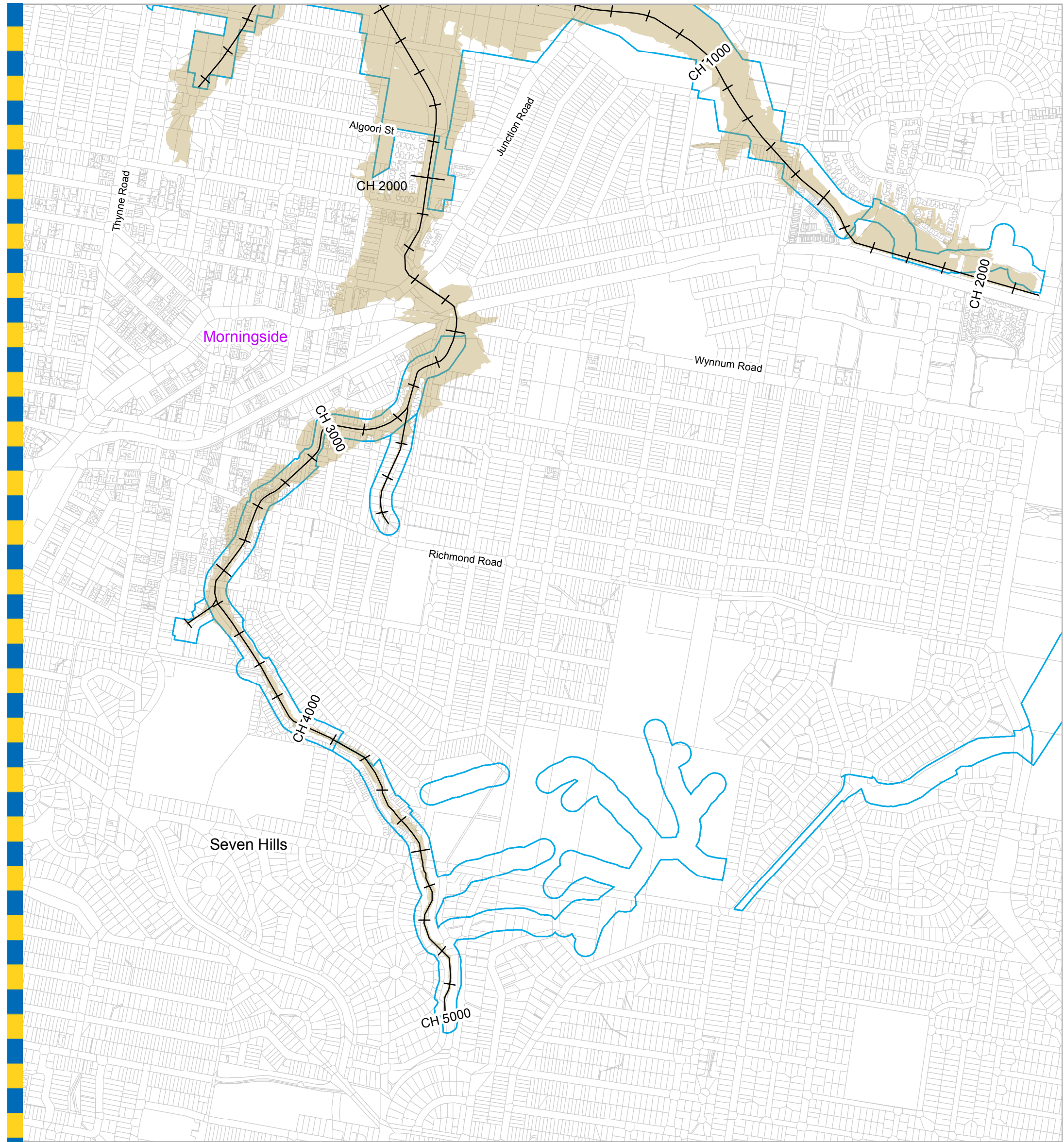
**Perrin Creek  
 1% AEP Flood Extent Map 1  
 Existing Scenario**



File: X:\43802188\Work\Deliverables\Final\Report\GIS\Workspace\Appendix-G\_100y\AR1\_inundation\_1.mxd

Prepared : madu  
 Checked : NC  
 Revision : 0  
 Publication Date : 30 Jun 2016  
 Project Number : 100001





**Legend**

- AMTD\_Line
- City Plan Waterway Corridors
- Flood Inundation Extent
- Waterway/Waterbody

**DATA INFORMATION**

The flood maps must be read in conjunction with the flood study report and interpreted by a qualified professional engineer. The flood maps are based on the best data available to Brisbane City Council ("Council") at the time the maps were developed. Council, and the copyright owners listed below, give no warranty in relation to the data (including accuracy, reliability, completeness, currency or suitability) presented in these maps and the user uses and relies upon the data in the maps at its own sole risk and liability. Council is not liable for errors or omissions in the flood maps. To the full extent that it is able to do so in law, the Council disclaims all liability (including without limitation, liability in negligence) for any loss, damage or costs (including indirect and consequential loss and damage), caused by or arising from anyone using or relying on the data contained in the flood maps for any purpose whatsoever.

©Brisbane City Council 2014 (Unless stated below)  
 Cadastre © 2006 Department of Natural Resources and Mines 2009 NAVTEQ Street Data © 2008 NAVTEQ;  
 2007 Aerial Imagery ©2007 Furgo Spatial Solutions; 2005 Aerial Imagery ©2005 QASCO; 2005 Brisway © 2009  
 Melway Publishing; 2005 DigitalGlobe Quickbird Satellite Imagery © 2005 DigitalGlobe; 2002 Contours © 2002 AAMHatch

**For Information Only - Not Council Policy**

Prepared by DHI for:  
 Brisbane City Council  
 City Projects Office  
 GPO Box 1434  
 Brisbane Qld 4001  
 For more information  
 visit [www.brisbane.qld.gov.au](http://www.brisbane.qld.gov.au)  
 or call (07) 3403 8888



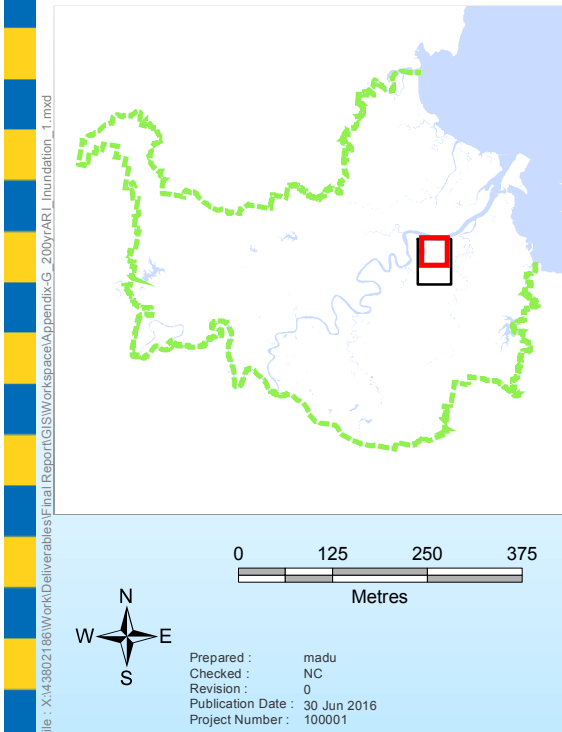
*Dedicated to a better Brisbane*

**Perrin Creek  
 1% AEP Flood Extent Map 2  
 Existing Scenario**

File: X:\43802186\Work\Deliverables\Final\Report\GIS\Workspace\Appendix-G\_100yAR1\_inundation\_2.mxd

Prepared : madu  
 Checked : NC  
 Revision : 0  
 Publication Date : 30 Jun 2016  
 Project Number : 100001





**Legend**

- AMTD\_Line
- City Plan Waterway Corridors
- Flood Inundation Extent
- Waterway/Waterbody

**DATA INFORMATION**

The flood maps must be read in conjunction with the flood study report and interpreted by a qualified professional engineer. The flood maps are based on the best data available to Brisbane City Council ("Council") at the time the maps were developed. Council, and the copyright owners listed below, give no warranty in relation to the data (including accuracy, reliability, completeness, currency or suitability) presented in these maps and the user uses and relies upon the data in the maps at its own sole risk and liability. Council is not liable for errors or omissions in the flood maps. To the full extent that it is able to do so in law, the Council disclaims all liability (including without limitation, liability in negligence) for any loss, damage or costs (including indirect and consequential loss and damage), caused by or arising from anyone using or relying on the data contained in the flood maps for any purpose whatsoever.

©Brisbane City Council 2014 (Unless stated below)  
 Cadastre © 2006 Department of Natural Resources and Mines 2009 NAVTEQ Street Data © 2008 NAVTEQ;  
 2007 Aerial Imagery © 2007 Furgu Spatial Solutions; 2005 Aerial Imagery © 2005 QASCO; 2005 Brisway © 2009  
 Melway Publishing; 2005 DigitalGlobe Quickbird Satellite Imagery © 2005 DigitalGlobe; 2002 Contours © 2002 AAMHatch

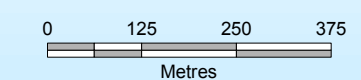
**For Information Only - Not Council Policy**

Prepared by DHI for:  
 Brisbane City Council  
 City Projects Office  
 GPO Box 1434  
 Brisbane Qld 4001  
 For more information  
 visit [www.brisbane.qld.gov.au](http://www.brisbane.qld.gov.au)  
 or call (07) 3403 8888



*Dedicated to a better Brisbane*

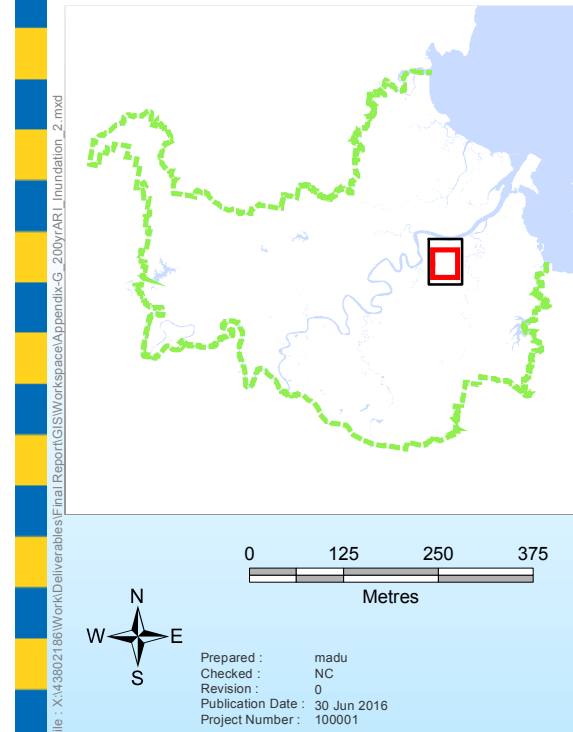
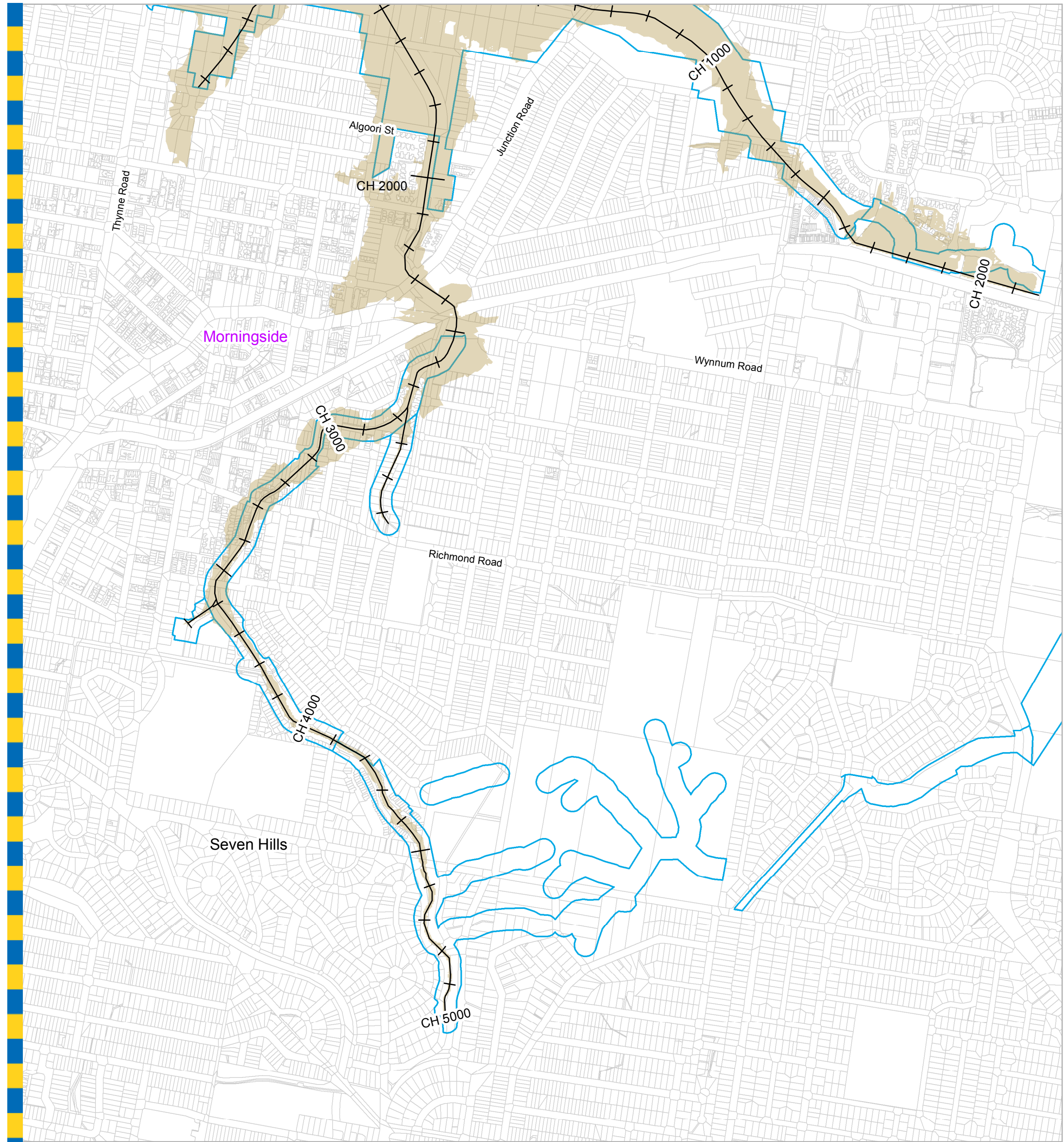
**Perrin Creek  
 0.5% AEP Flood Extent Map 1  
 Existing Scenario**



Prepared : madu  
 Checked : NC  
 Revision : 0  
 Publication Date : 30 Jun 2016  
 Project Number : 100001

File: X:\4380218\Work\Deliverables\Final\Report\GIS\Workspace\Appendix-G\_200y\AR1\_inundation\_1.mxd





**Legend**

- AMTD\_Line
- City Plan Waterway Corridors
- Flood Inundation Extent
- Waterway/Waterbody

**DATA INFORMATION**

The flood maps must be read in conjunction with the flood study report and interpreted by a qualified professional engineer. The flood maps are based on the best data available to Brisbane City Council ("Council") at the time the maps were developed. Council, and the copyright owners listed below, give no warranty in relation to the data (including accuracy, reliability, completeness, currency or suitability) presented in these maps and the user uses and relies upon the data in the maps at its own sole risk and liability. Council is not liable for errors or omissions in the flood maps. To the full extent that it is able to do so in law, the Council disclaims all liability (including without limitation, liability in negligence) for any loss, damage or costs (including indirect and consequential loss and damage), caused by or arising from anyone using or relying on the data contained in the flood maps for any purpose whatsoever.

©Brisbane City Council 2014 (Unless stated below)  
 Cadastre © 2006 Department of Natural Resources and Mines 2009 NAVTEQ Street Data © 2008 NAVTEQ;  
 2007 Aerial Imagery ©2007 Furgo Spatial Solutions; 2005 Aerial Imagery ©2005 QASCO; 2005 Brisway © 2009  
 Melway Publishing; 2005 DigitalGlobe Quickbird Satellite Imagery © 2005 DigitalGlobe; 2002 Contours © 2002 AAMHatch

**For Information Only - Not Council Policy**

Prepared by DHI for:  
 Brisbane City Council  
 City Projects Office  
 GPO Box 1434  
 Brisbane Qld 4001  
 For more information  
 visit [www.brisbane.qld.gov.au](http://www.brisbane.qld.gov.au)  
 or call (07) 3403 8888



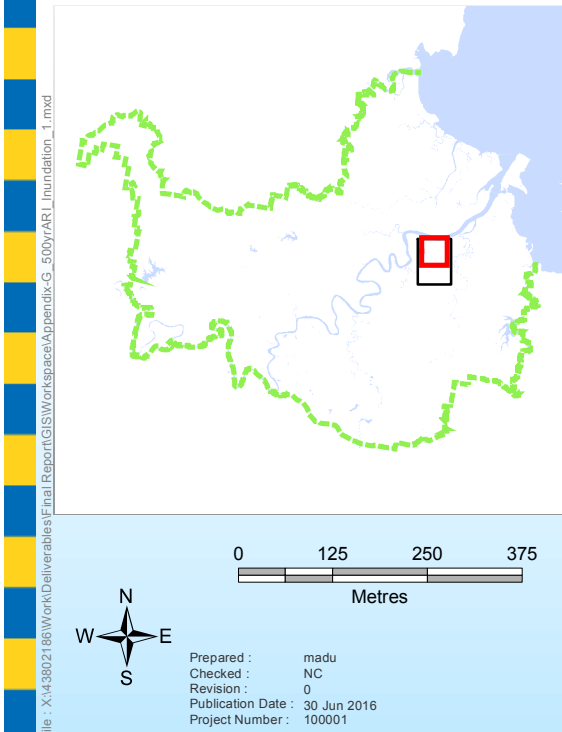
*Dedicated to a better Brisbane*

**Perrin Creek  
 0.5% AEP Flood Extent Map 2  
 Existing Scenario**

File: X:\4380218\Work\Deliverables\Final\Report\GIS\Workspace\Appendix-G\_200y\AR1\_inundation\_2.mxd

Prepared : madu  
 Checked : NC  
 Revision : 0  
 Publication Date : 30 Jun 2016  
 Project Number : 100001





**Legend**

- AMTD\_Line
- City Plan Waterway Corridors
- Flood Inundation Extent
- Waterway/Waterbody

**DATA INFORMATION**

The flood maps must be read in conjunction with the flood study report and interpreted by a qualified professional engineer. The flood maps are based on the best data available to Brisbane City Council ("Council") at the time the maps were developed. Council, and the copyright owners listed below, give no warranty in relation to the data (including accuracy, reliability, completeness, currency or suitability) presented in these maps and the user uses and relies upon the data in the maps at its own sole risk and liability. Council is not liable for errors or omissions in the flood maps. To the full extent that it is able to do so in law, the Council disclaims all liability (including without limitation, liability in negligence) for any loss, damage or costs (including indirect and consequential loss and damage), caused by or arising from anyone using or relying on the data contained in the flood maps for any purpose whatsoever.

©Brisbane City Council 2014 (Unless stated below)  
 Cadastre © 2006 Department of Natural Resources and Mines 2009 NAVTEQ Street Data © 2008 NAVTEQ;  
 2007 Aerial Imagery © 2007 Furgo Spatial Solutions; 2005 Aerial Imagery © 2005 QASCO; 2005 Brisway © 2009  
 Melway Publishing; 2005 DigitalGlobe Quickbird Satellite Imagery © 2005 DigitalGlobe; 2002 Contours © 2002 AAMHatch

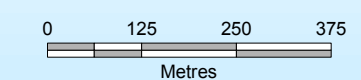
**For Information Only - Not Council Policy**

Prepared by DHI for:  
 Brisbane City Council  
 City Projects Office  
 GPO Box 1434  
 Brisbane Qld 4001  
 For more information  
 visit [www.brisbane.qld.gov.au](http://www.brisbane.qld.gov.au)  
 or call (07) 3403 8888



*Dedicated to a better Brisbane*

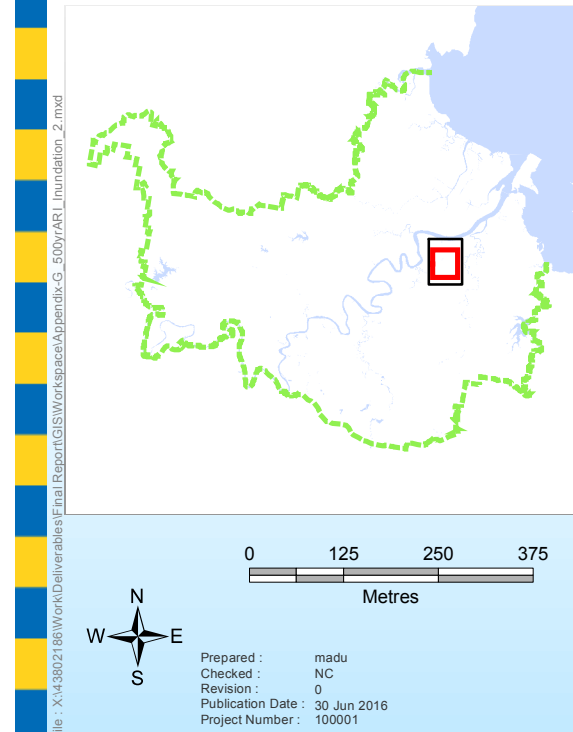
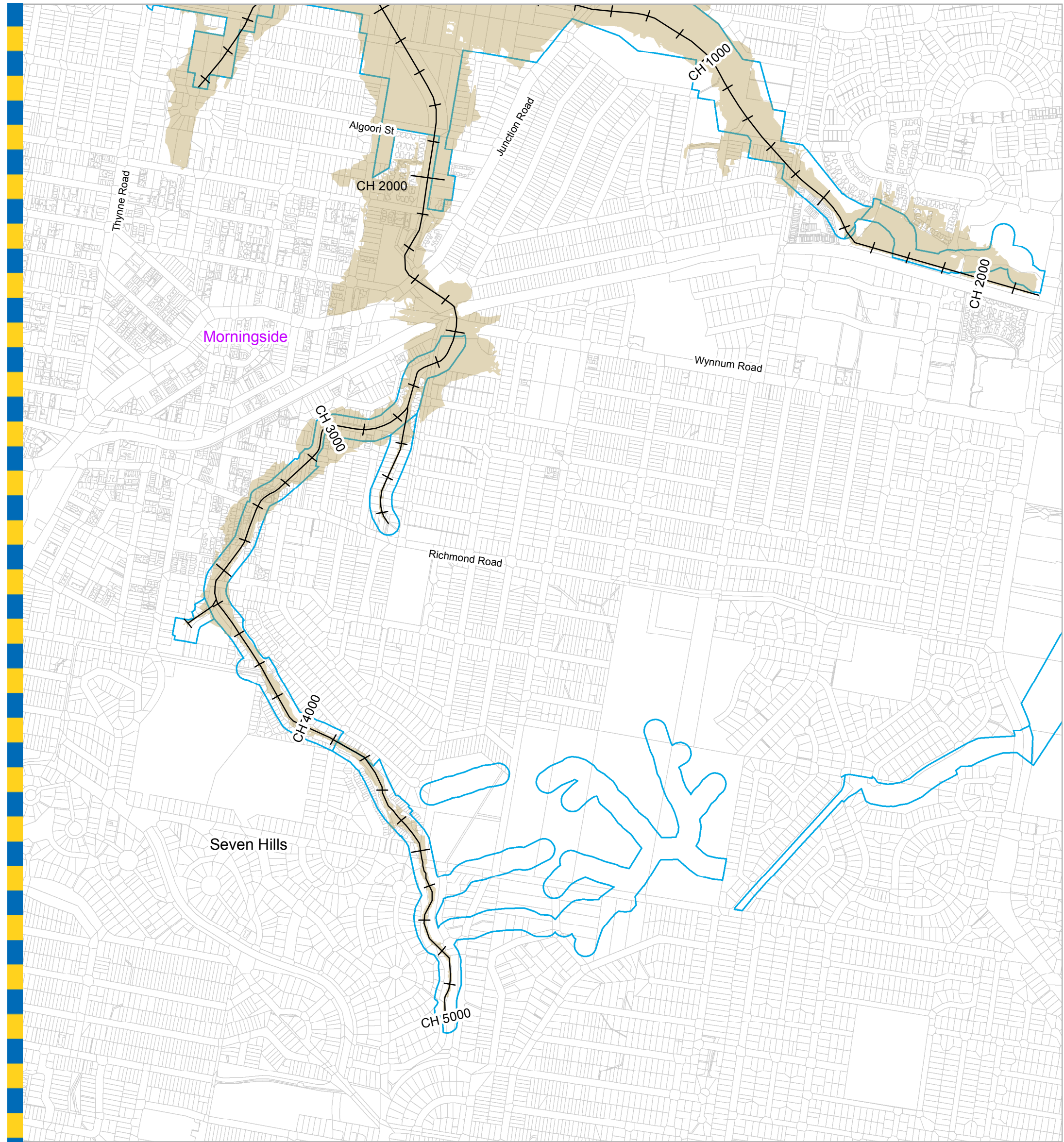
**Perrin Creek  
 0.2% AEP Flood Extent Map 1  
 Existing Scenario**



Prepared : madu  
 Checked : NC  
 Revision : 0  
 Publication Date : 30 Jun 2016  
 Project Number : 100001

File: X:\4380218\Work\Deliverables\Final\Report\GIS\Workspace\Appendix-G\_500yr\AR1\_inundation\_1.mxd





**Legend**

- AMTD\_Line
- City Plan Waterway Corridors
- Flood Inundation Extent
- Waterway/Waterbody

**DATA INFORMATION**

The flood maps must be read in conjunction with the flood study report and interpreted by a qualified professional engineer. The flood maps are based on the best data available to Brisbane City Council ("Council") at the time the maps were developed. Council, and the copyright owners listed below, give no warranty in relation to the data (including accuracy, reliability, completeness, currency or suitability) presented in these maps and the user uses and relies upon the data in the maps at its own sole risk and liability. Council is not liable for errors or omissions in the flood maps. To the full extent that it is able to do so in law, the Council disclaims all liability (including without limitation, liability in negligence) for any loss, damage or costs (including indirect and consequential loss and damage), caused by or arising from anyone using or relying on the data contained in the flood maps for any purpose whatsoever.

©Brisbane City Council 2014 (Unless stated below)  
 Cadastre © 2006 Department of Natural Resources and Mines 2009 NAVTEQ Street Data © 2008 NAVTEQ;  
 2007 Aerial Imagery ©2007 Furgo Spatial Solutions; 2005 Aerial Imagery ©2005 QASCO; 2005 Brisway © 2009  
 Melway Publishing; 2005 DigitalGlobe Quickbird Satellite Imagery © 2005 DigitalGlobe; 2002 Contours © 2002 AAMHatch

**For Information Only - Not Council Policy**

Prepared by DHI for:  
 Brisbane City Council  
 City Projects Office  
 GPO Box 1434  
 Brisbane Qld 4001  
 For more information  
 visit [www.brisbane.qld.gov.au](http://www.brisbane.qld.gov.au)  
 or call (07) 3403 8888



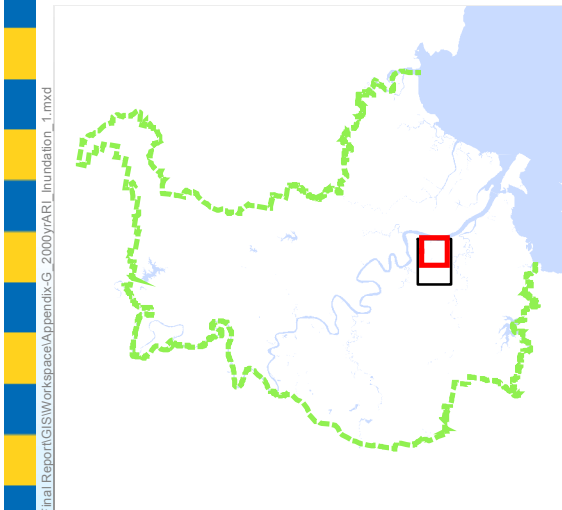
*Dedicated to a better Brisbane*

**Perrin Creek  
 0.2% AEP Flood Extent Map 2  
 Existing Scenario**

File: X:\4380218\Work\Deliverables\Final\Report\GIS\Workspace\Appendix-G\_500yrARL\_inundation\_2.mxd

Prepared : madu  
 Checked : NC  
 Revision : 0  
 Publication Date : 30 Jun 2016  
 Project Number : 100001





**Legend**

- AMTD\_Line
- City Plan Waterway Corridors
- Flood Inundation Extent
- Waterway/Waterbody

**For Information Only - Not Council Policy**

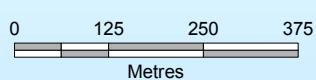
Prepared by DHI for:  
 Brisbane City Council  
 City Projects Office  
 GPO Box 1434  
 Brisbane Qld 4001  
 For more information  
 visit [www.brisbane.qld.gov.au](http://www.brisbane.qld.gov.au)  
 or call (07) 3403 8888



*Dedicated to a better Brisbane*

**DATA INFORMATION**

The flood maps must be read in conjunction with the flood study report and interpreted by a qualified professional engineer. The flood maps are based on the best data available to Brisbane City Council ("Council") at the time the maps were developed. Council, and the copyright owners listed below, give no warranty in relation to the data (including accuracy, reliability, completeness, currency or suitability) presented in these maps and the user uses and relies upon the data in the maps at its own sole risk and liability. Council is not liable for errors or omissions in the flood maps. To the full extent that it is able to do so in law, the Council disclaims all liability (including without limitation, liability in negligence) for any loss, damage or costs (including indirect and consequential loss and damage), caused by or arising from anyone using or relying on the data contained in the flood maps for any purpose whatsoever.

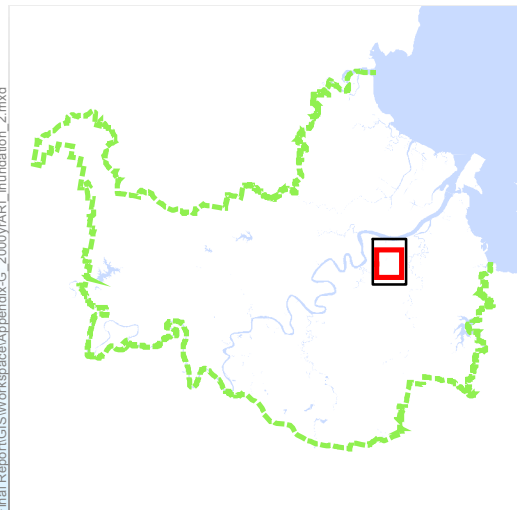
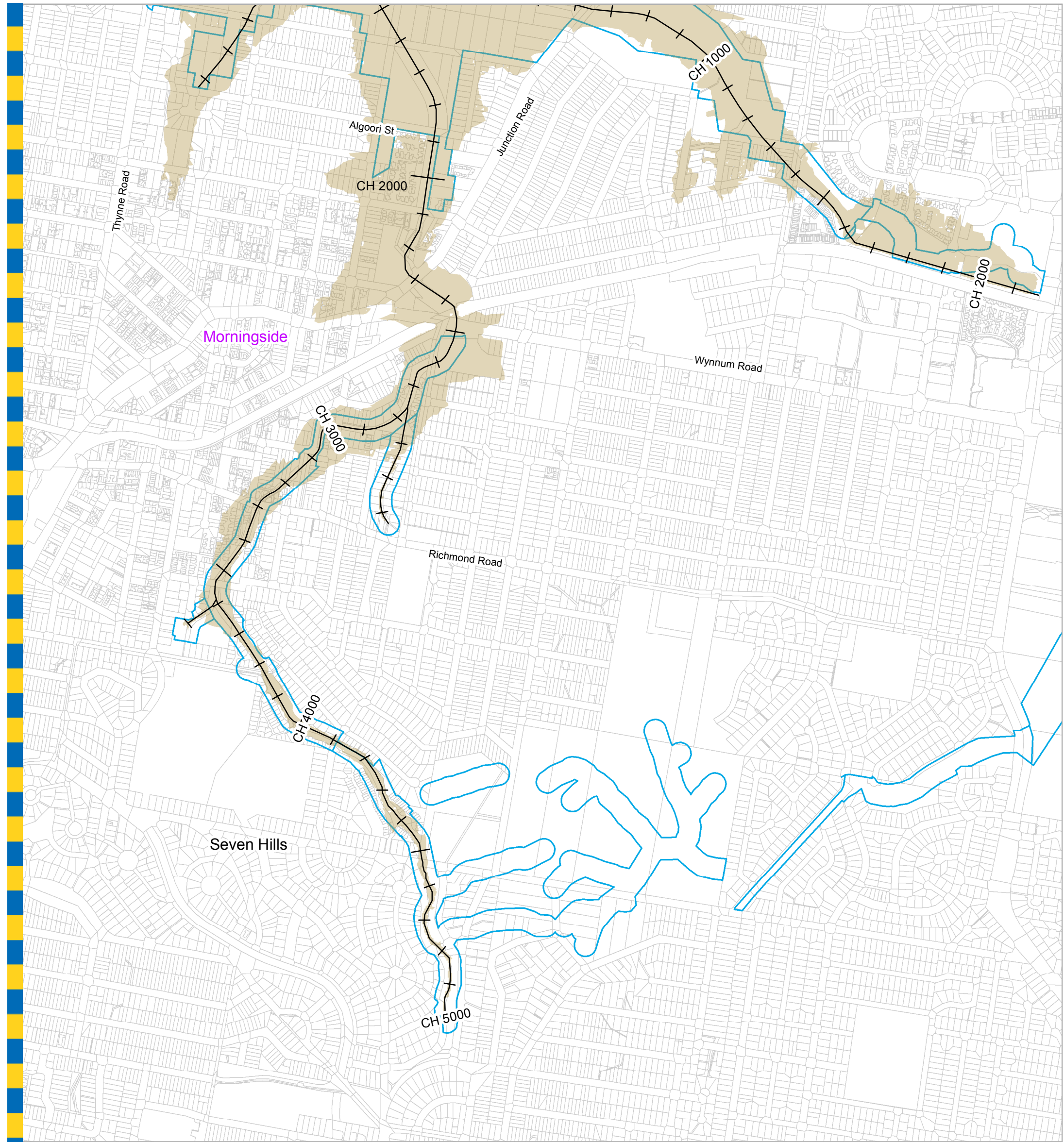


Prepared : madu  
 Checked : NC  
 Revision : 0  
 Publication Date : 30 Jun 2016  
 Project Number : 100001

**Perrin Creek  
 0.05% AEP Flood Extent Map 1  
 Existing Scenario**

©Brisbane City Council 2014 (Unless stated below)  
 Cadastre © 2006 Department of Natural Resources and Mines 2009 NAVTEQ Street Data © 2008 NAVTEQ;  
 2007 Aerial Imagery ©2007 Furgo Spatial Solutions; 2005 Aerial Imagery ©2005 QASCO; 2005 Brisway © 2009  
 Melway Publishing; 2005 DigitalGlobe Quickbird Satellite Imagery © 2005 DigitalGlobe; 2002 Contours © 2002 AAMHatch





**Legend**

- AMTD\_Line
- City Plan Waterway Corridors
- Flood Inundation Extent
- Waterway/Waterbody

**DATA INFORMATION**

The flood maps must be read in conjunction with the flood study report and interpreted by a qualified professional engineer. The flood maps are based on the best data available to Brisbane City Council ("Council") at the time the maps were developed. Council, and the copyright owners listed below, give no warranty in relation to the data (including accuracy, reliability, completeness, currency or suitability) presented in these maps and the user uses and relies upon the data in the maps at its own sole risk and liability. Council is not liable for errors or omissions in the flood maps. To the full extent that it is able to do so in law, the Council disclaims all liability (including without limitation, liability in negligence) for any loss, damage or costs (including indirect and consequential loss and damage), caused by or arising from anyone using or relying on the data contained in the flood maps for any purpose whatsoever.

©Brisbane City Council 2014 (Unless stated below)  
 Cadastre © 2006 Department of Natural Resources and Mines 2009 NAVTEQ Street Data © 2008 NAVTEQ;  
 2007 Aerial Imagery ©2007 Furgu Spatial Solutions; 2005 Aerial Imagery ©2005 QASCO; 2005 Brisway © 2009  
 Melway Publishing; 2005 DigitalGlobe Quickbird Satellite Imagery © 2005 DigitalGlobe; 2002 Contours © 2002 AAMHatch

**For Information Only - Not Council Policy**

Prepared by DHI for:  
 Brisbane City Council  
 City Projects Office  
 GPO Box 1434  
 Brisbane Qld 4001  
 For more information  
 visit [www.brisbane.qld.gov.au](http://www.brisbane.qld.gov.au)  
 or call (07) 3403 8888



*Dedicated to a better Brisbane*

**Perrin Creek  
 0.05% AEP Flood Extent Map 2  
 Existing Scenario**

0 125 250 375  
 Metres

Prepared : madu  
 Checked : NC  
 Revision : 0  
 Publication Date : 30 Jun 2016  
 Project Number : 100001

File: X:\4380218\Work\Deliverables\Final\Report\GIS\Workspace\Appendix-G\_2000yr\ARI\_Inundation\_2.mxd